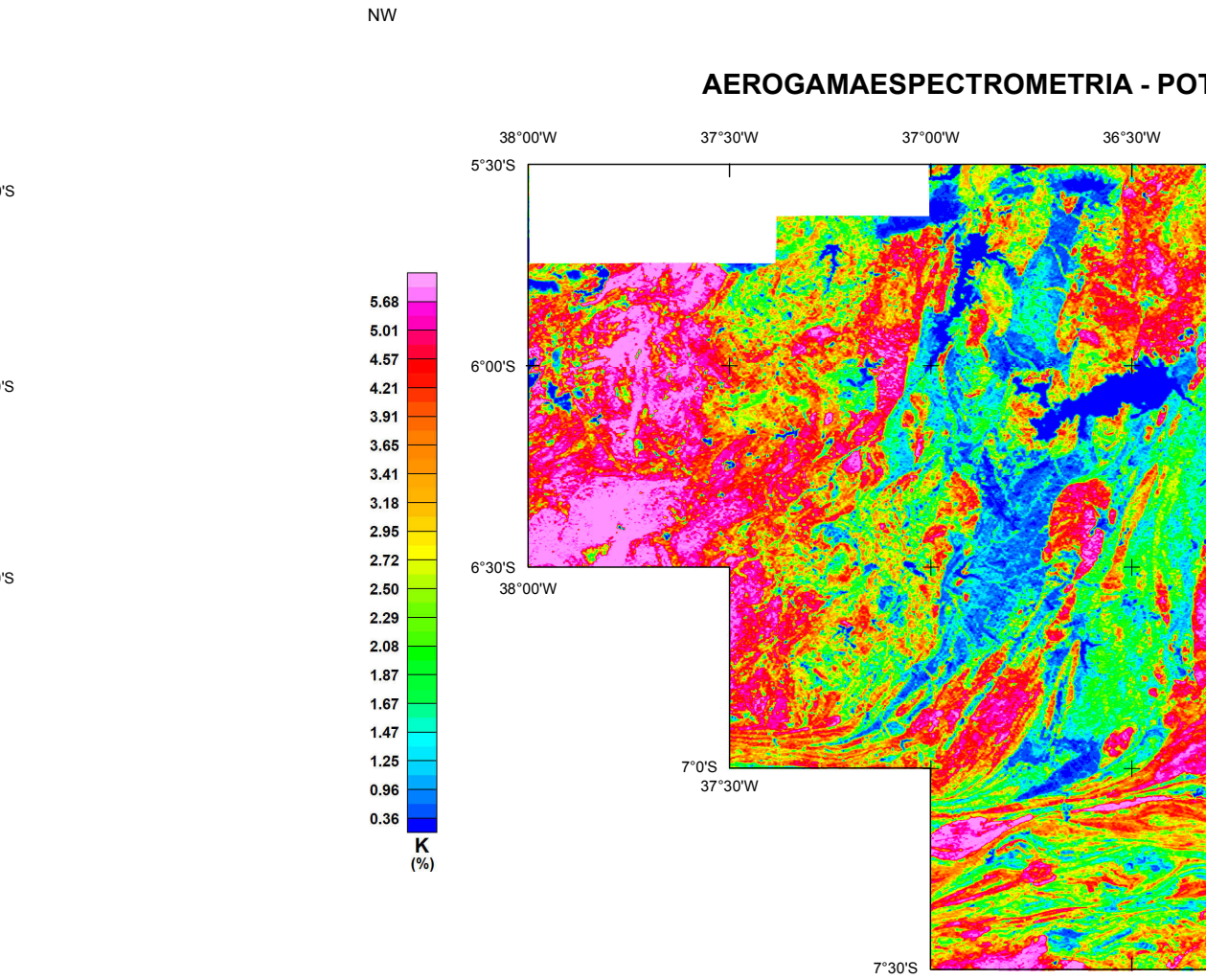
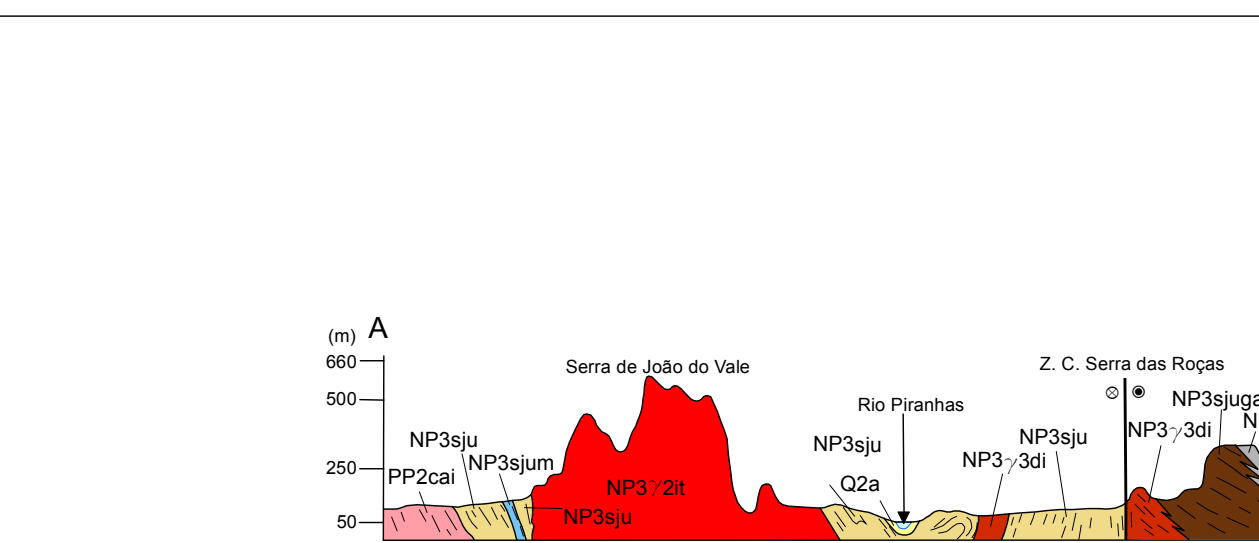
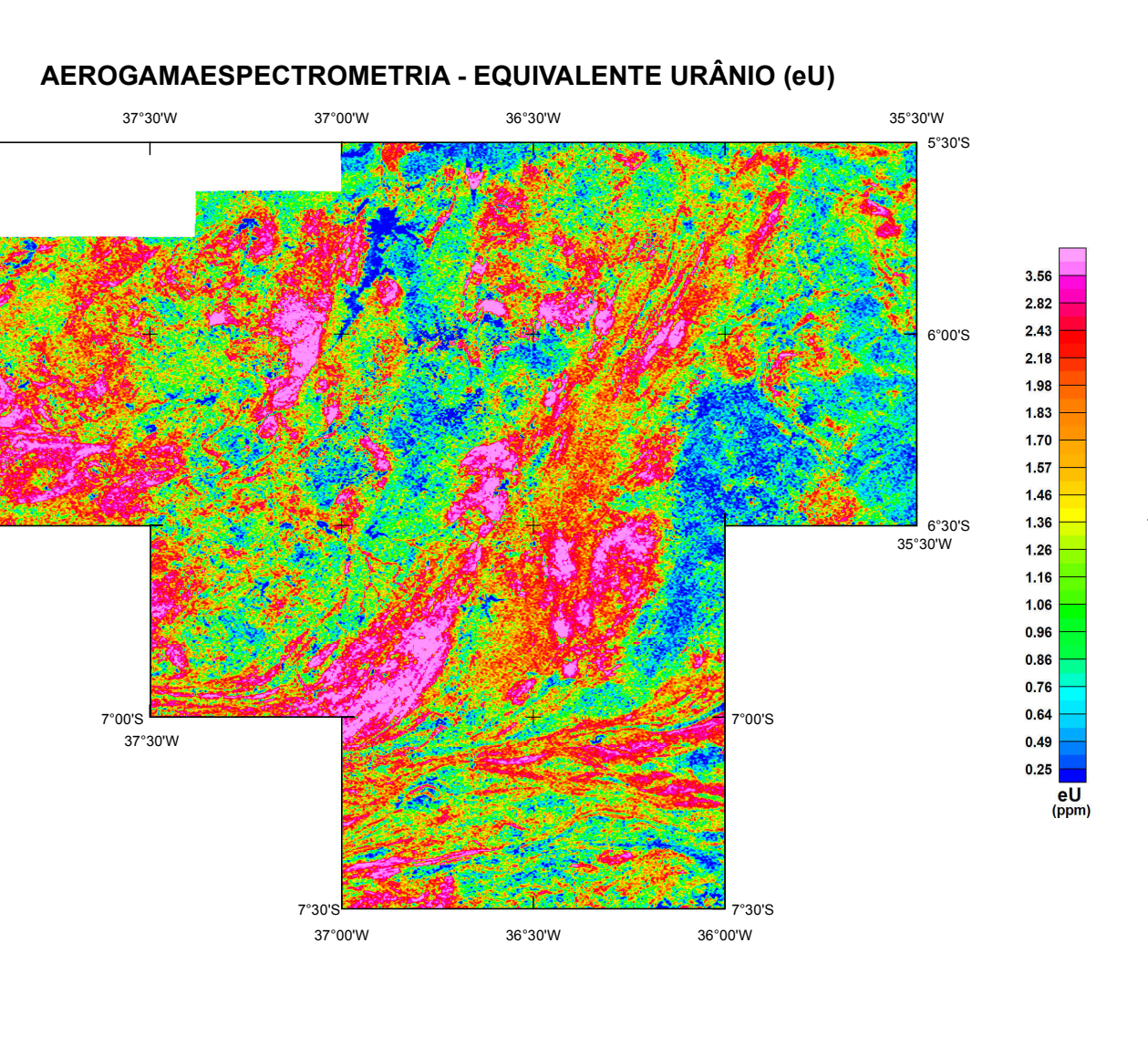
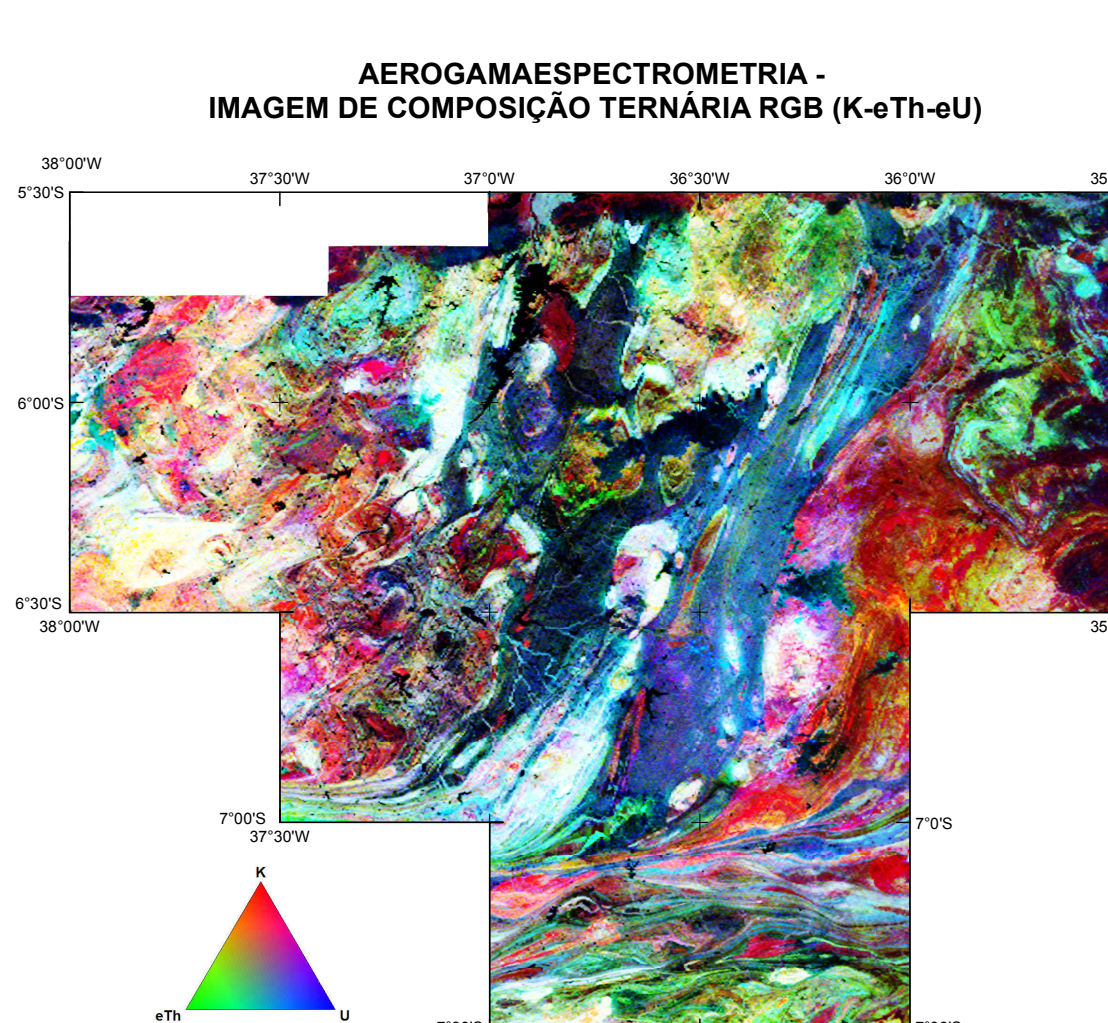
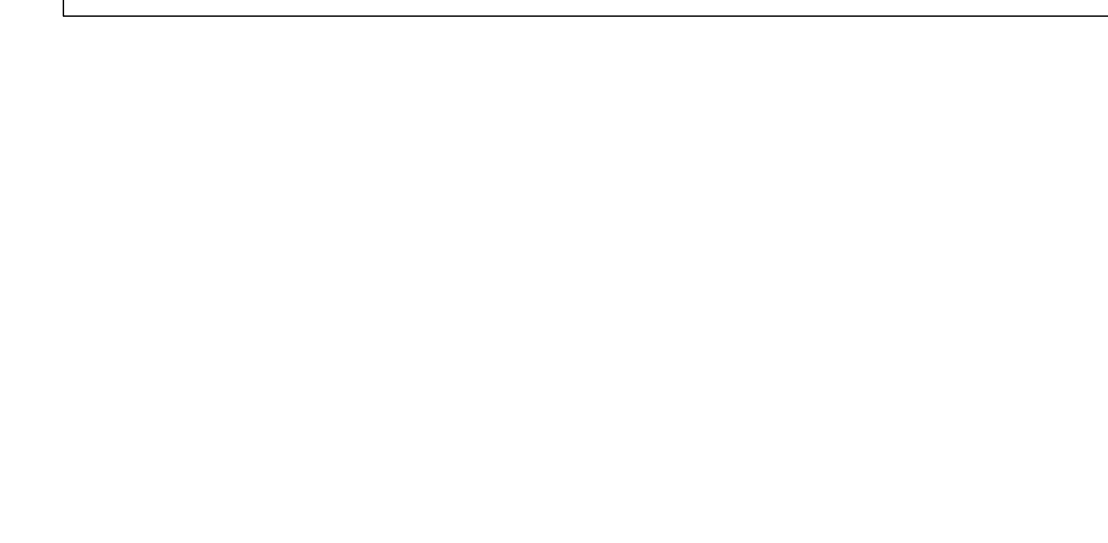
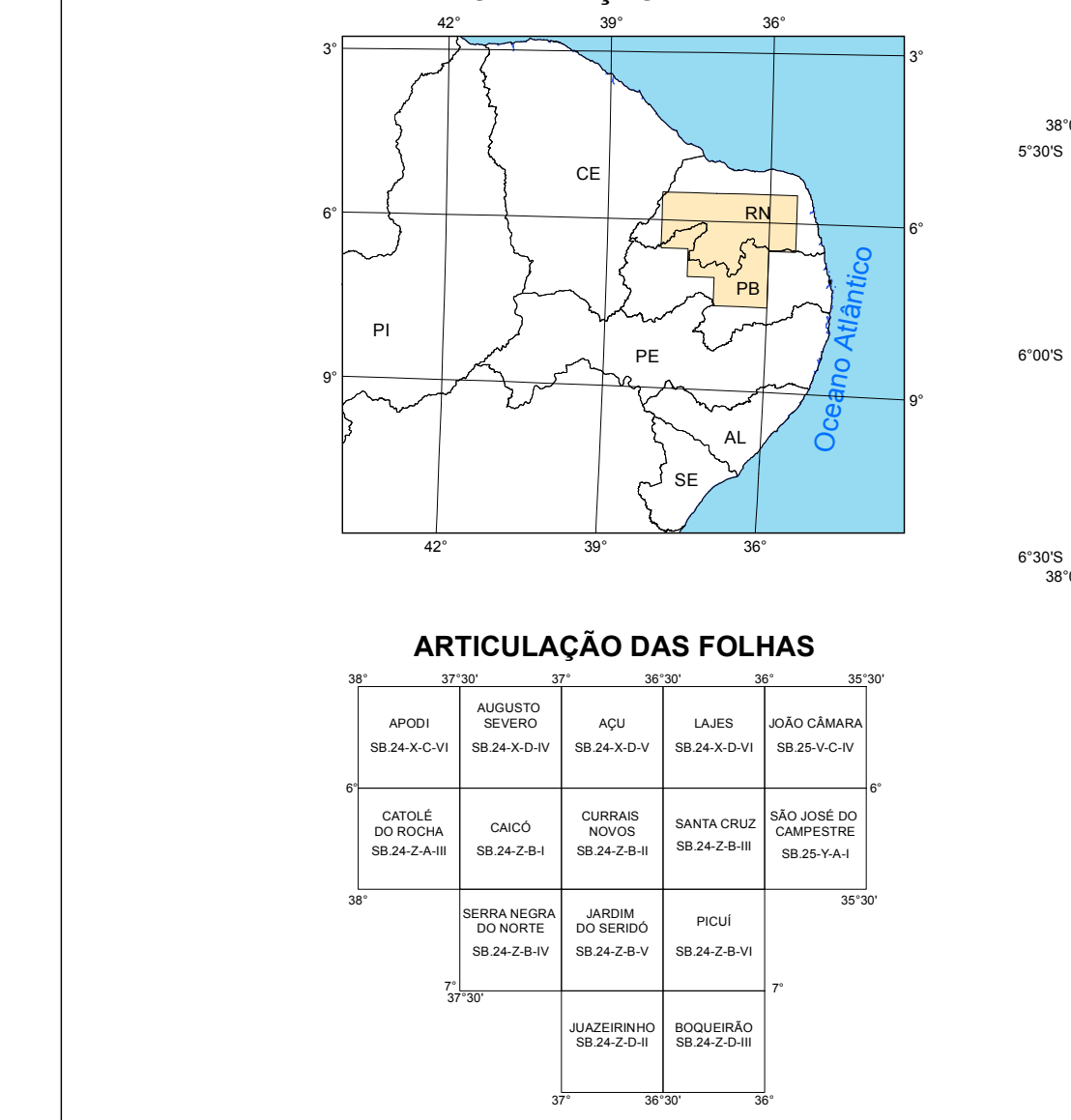
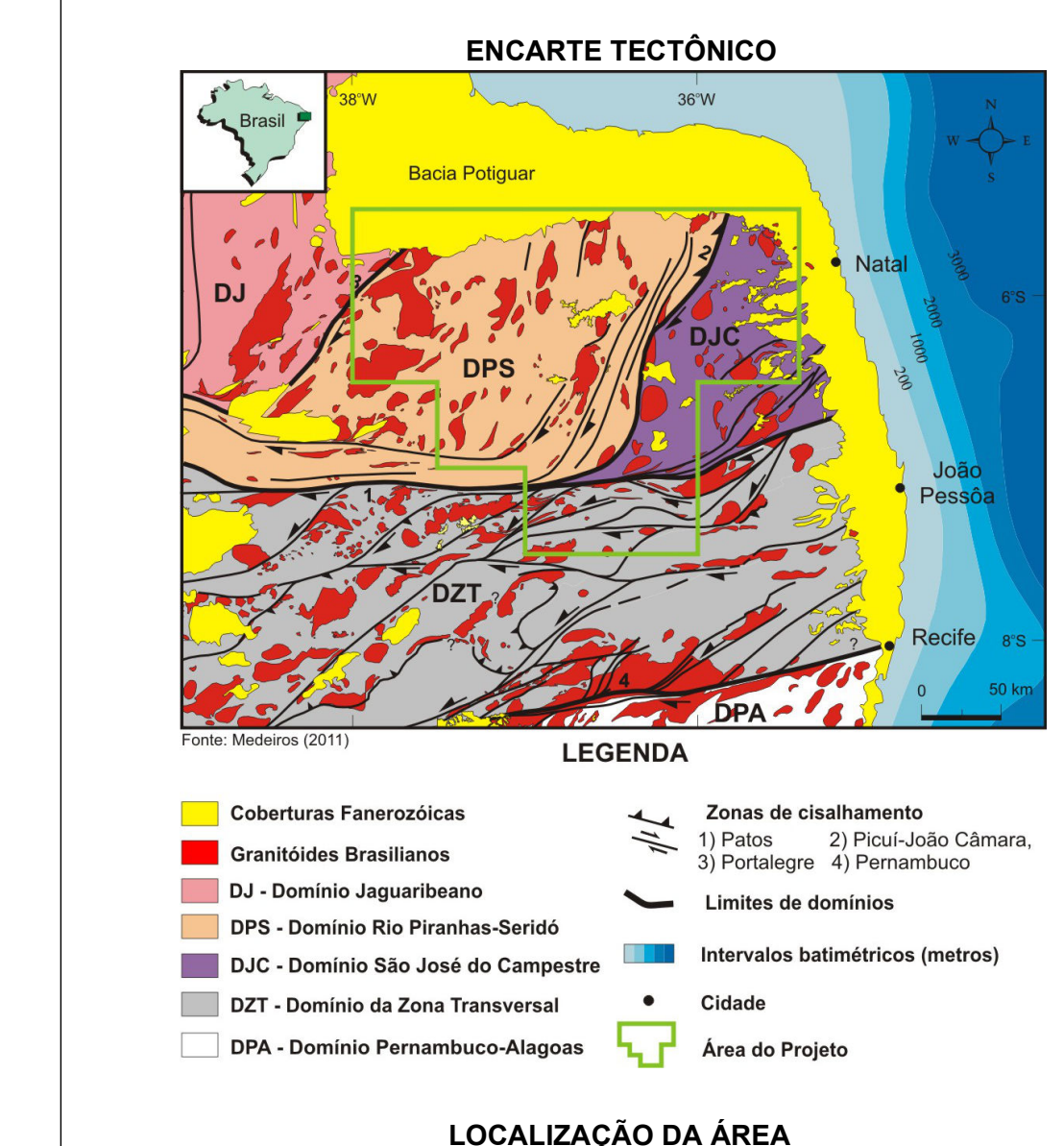


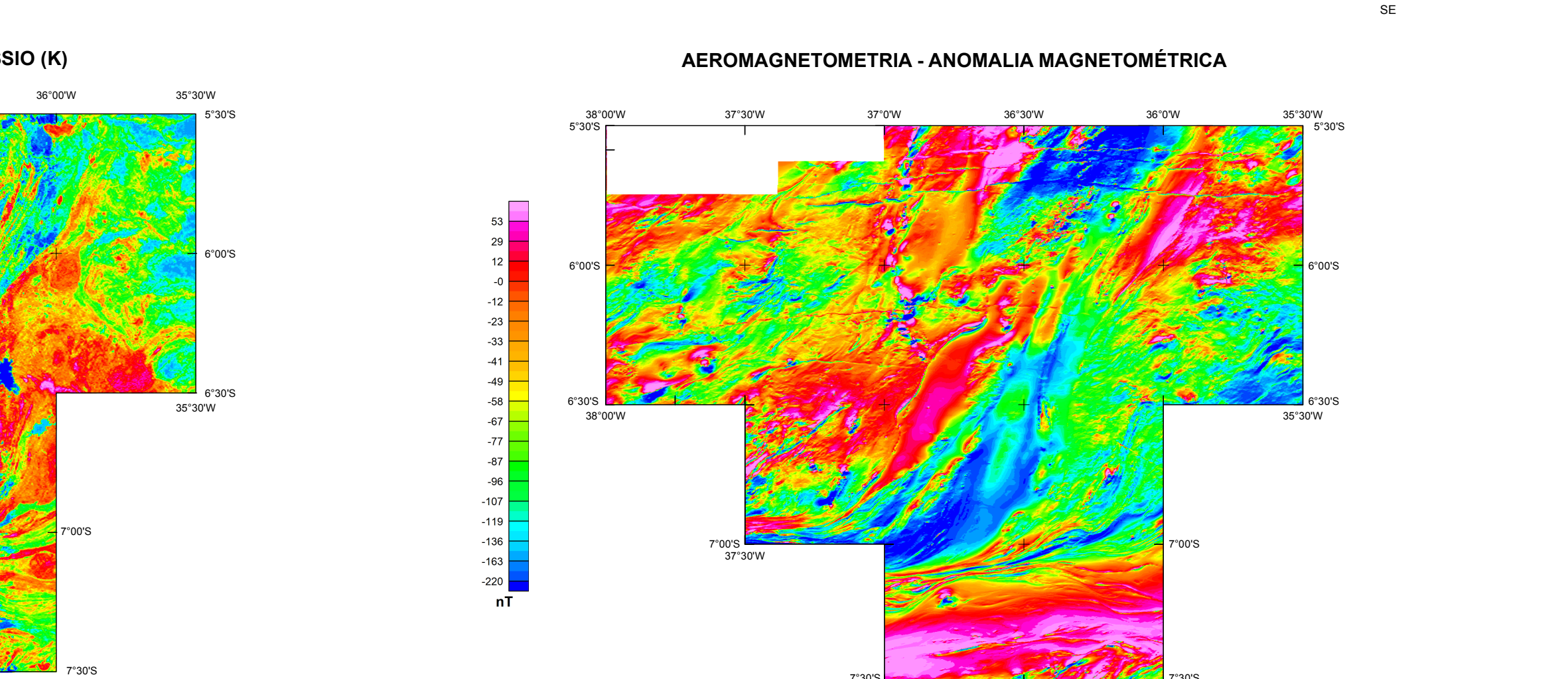
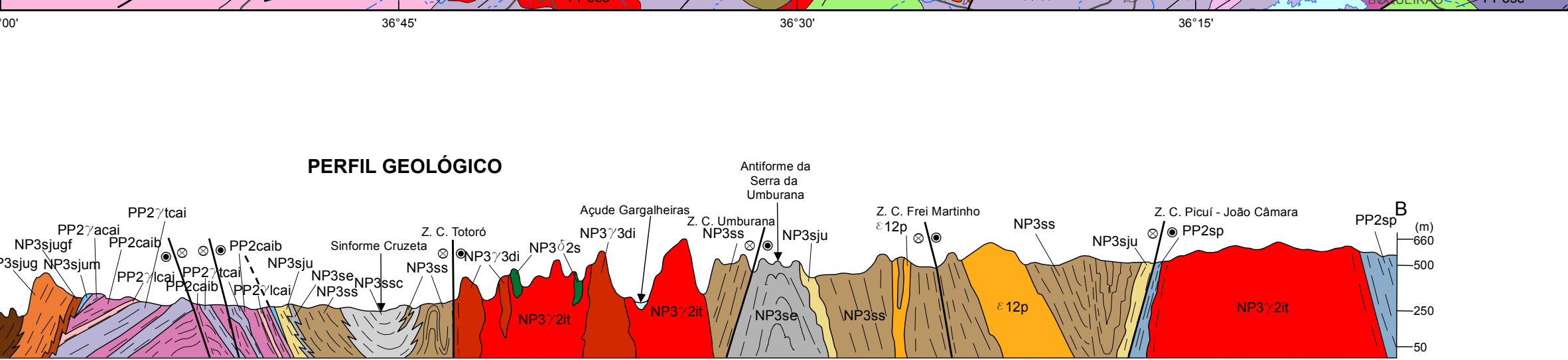
Table with columns: ERA, PERÍODO, IDADE, COBERTURAS CONTINENTAIS, MAGMATISMO BÁSICO. It lists geological units and their corresponding colors and symbols.

Table with columns: ERA, PERÍODO, IDADE, DOMÍNIO JAGUARIBIANO, DOMÍNIO RIO PINHANAS - SERIDÓ, DOMÍNIO SÃO JOSÉ DO CAMPESTRE, ZONA TRANSVERSAL. It details the stratigraphic and tectonic relationships between different geological domains.



Convenções Geológicas: A list of symbols and line styles used on the geological map to represent various geological features like faults, folds, and unconformities.

Convenções Cartográficas: A list of symbols and line styles used for cartographic purposes, such as roads, rivers, and urban areas.



UNIDADES LITOSTRATIGRÁFICAS QUATERNÁRIO (Q): Depósitos aluvionares de planície aluvial... PALEOZOICO (P): Formação Serra dos Marins... MESOZOICO (M): Formação Serra do Cuca... PROTEROZOICO (Pz): Grupo Itaipava... PÁLEOZOICO (P): Formação Itaipava... PROTEROZOICO (Pz): Grupo Itaipava... PÁLEOZOICO (P): Formação Itaipava... PROTEROZOICO (Pz): Grupo Itaipava...