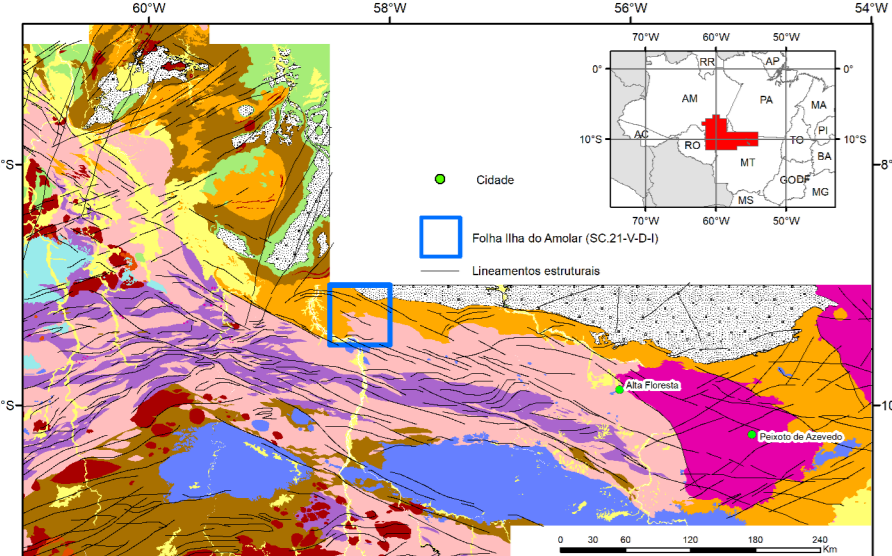
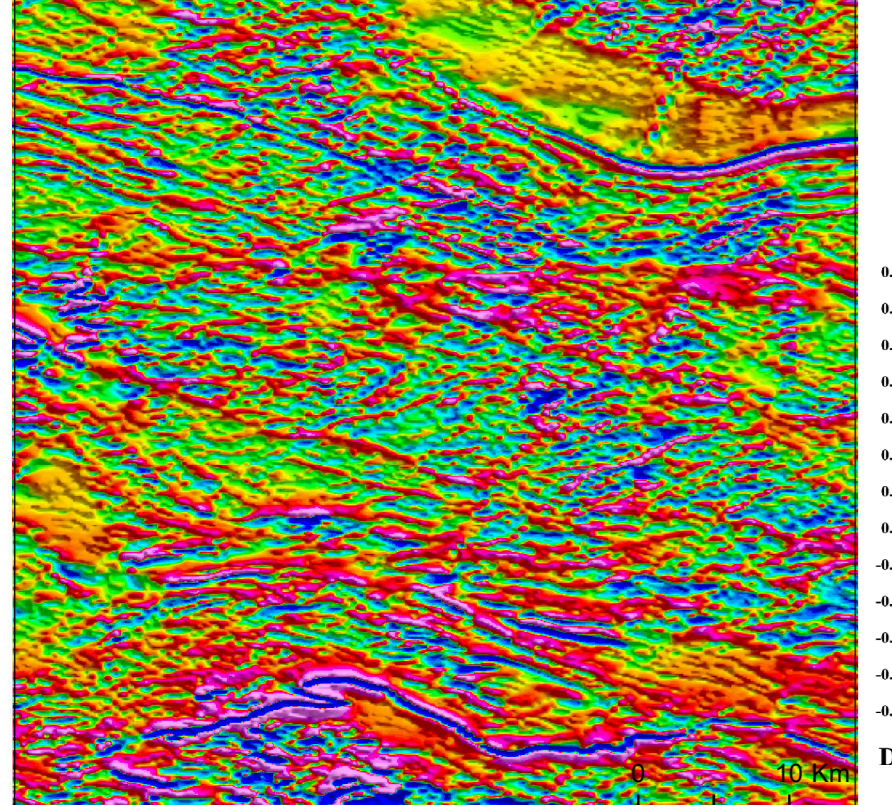


ENCARTE TECTÔNICO

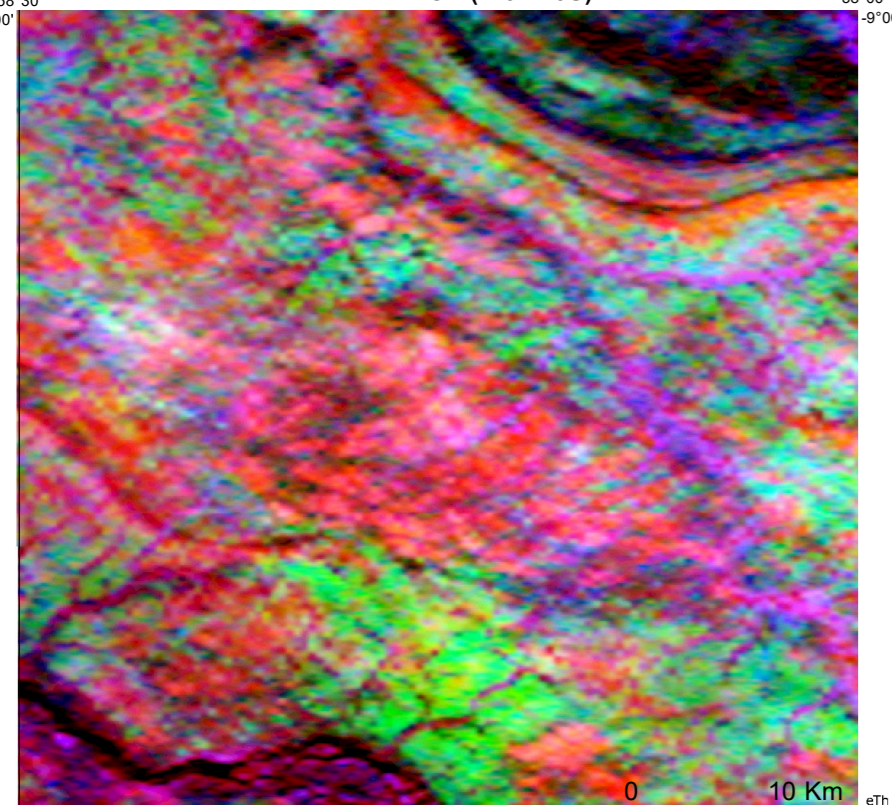


Legend for geological units and features, including symbols for faults, folds, and specific geological units like Q2a and PP34acc.

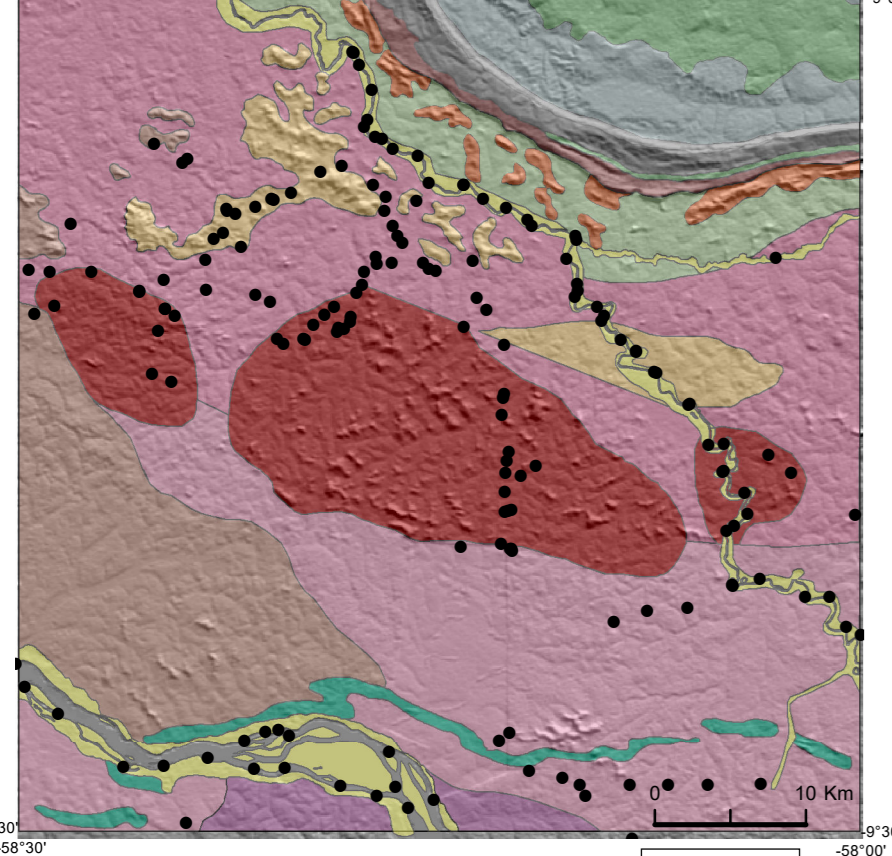
AEROMAGNETOMETRIA - PRIMEIRA DERIVADA VERTICAL (Dz)



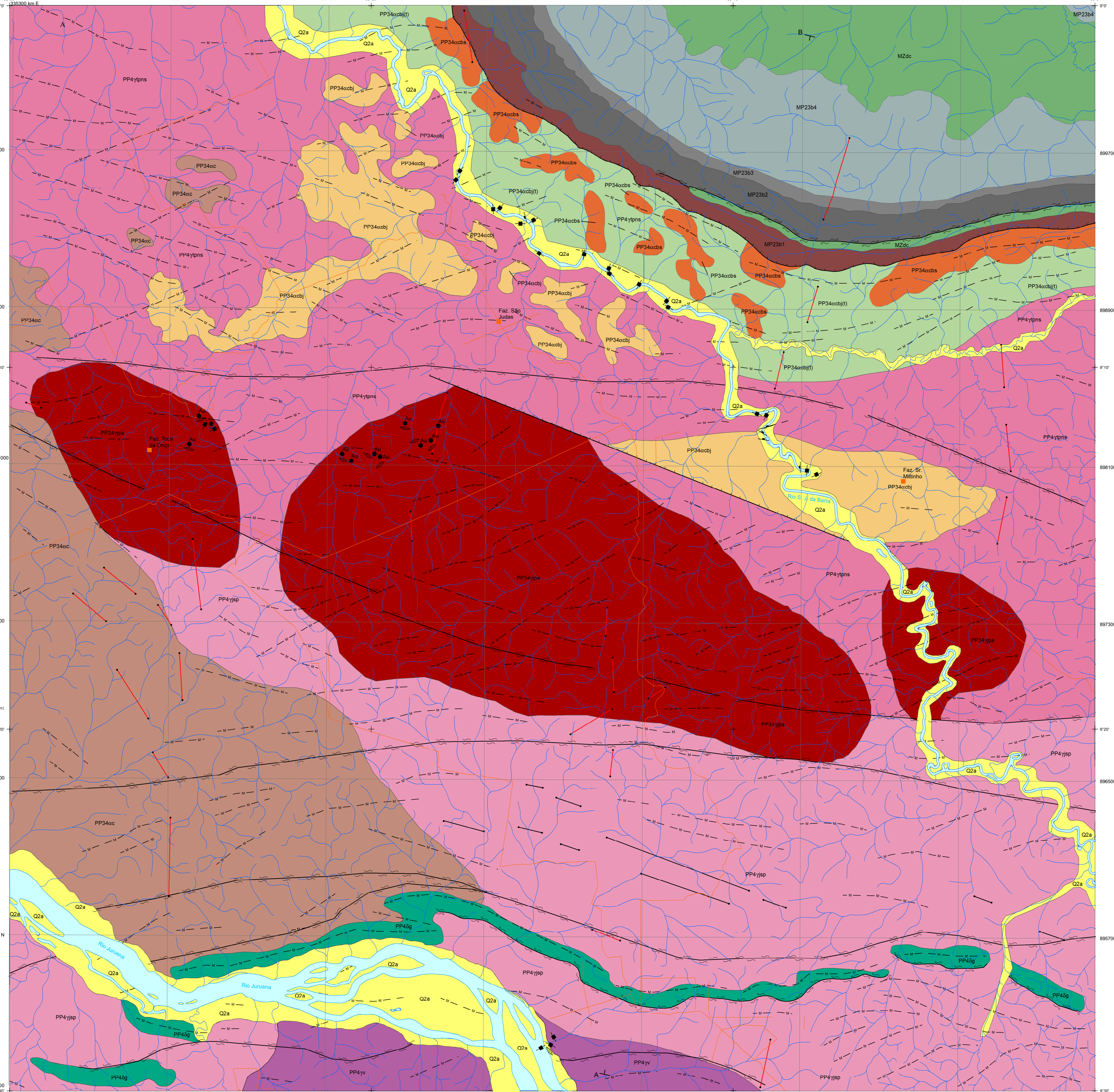
AEROGAMMAESPECTROMETRIA - IMAGEM DE COMPOSIÇÃO TERNÁRIA RGB (K-eTh-eU)



RELEVO SOMBREADO + GEOLOGIA + AFLORAMENTOS



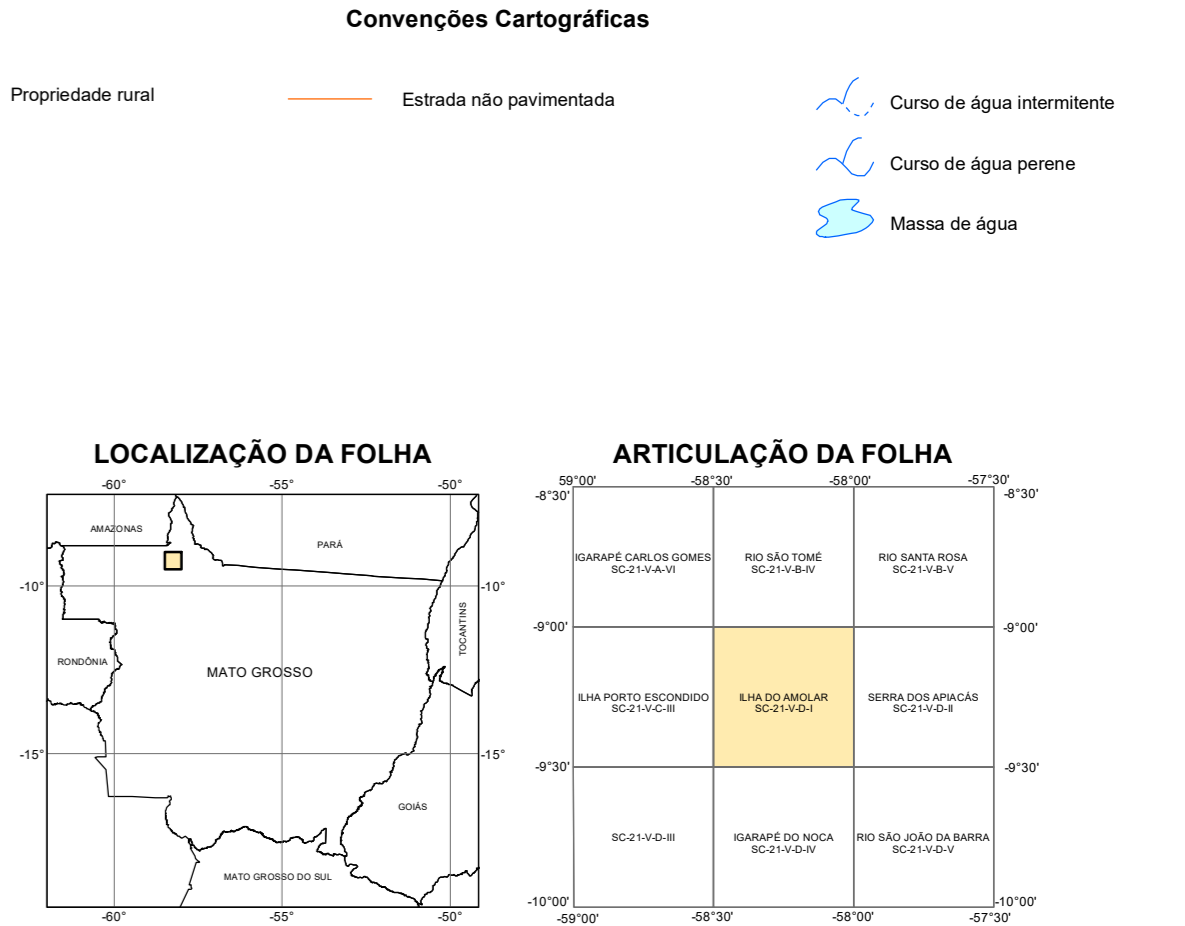
FOLHA SC.21-V-D-1 ILHA DO AMOLAR



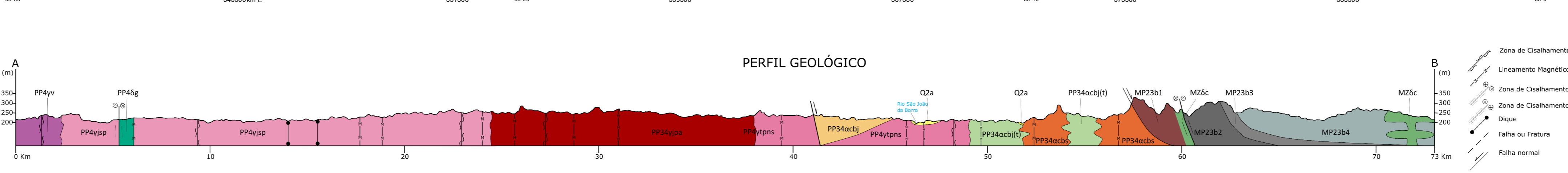
RELACOES TECTONO-ESTRATIGRAFICAS: Stratigraphic correlation chart showing the relationship between geological units across different geological periods (Quaternary, Mesozoic, Paleoproterozoic).

UNIDADES LITOESTRATIGRAFICAS GEOZOICAS: Detailed description of geological units, including their lithology, stratigraphic position, and age ranges.

- Convenções Geológicas: Symbols and definitions for geological features such as faults, folds, and dislocations.
- Convenções Cartográficas: Symbols and definitions for cartographic features like rural properties and roads.



AVISO LEGAL: Legal notice regarding the use of the geological map, stating that it is a public good and that the user assumes responsibility for its use.



Administrative and technical information, including the names and titles of the project manager, technical staff, and the responsible organization (CPRM).

