

Table with geological units and descriptions, including sections like 'RELAÇÕES TECTONO-ESTRATIGRÁFICAS', 'COBERTURAS SUPERFICIAIS - DEPOSITOS CONTINENTAIS', and 'UNIDADES LITOESTRATIGRÁFICAS CENOZOÍICO'.

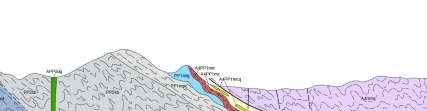


Table listing authors and their affiliations, including 'CRÉDITOS DE AUTORIA' and 'CONTEÚDO TÉCNICO'.

Table listing geological and cartographic conventions used in the map.

Textual information regarding the map's projection, scale, and contact information for the Serviço Geológico do Brasil - CPRM.

Geological and cartographic conventions section, including symbols for geological features and cartographic elements.