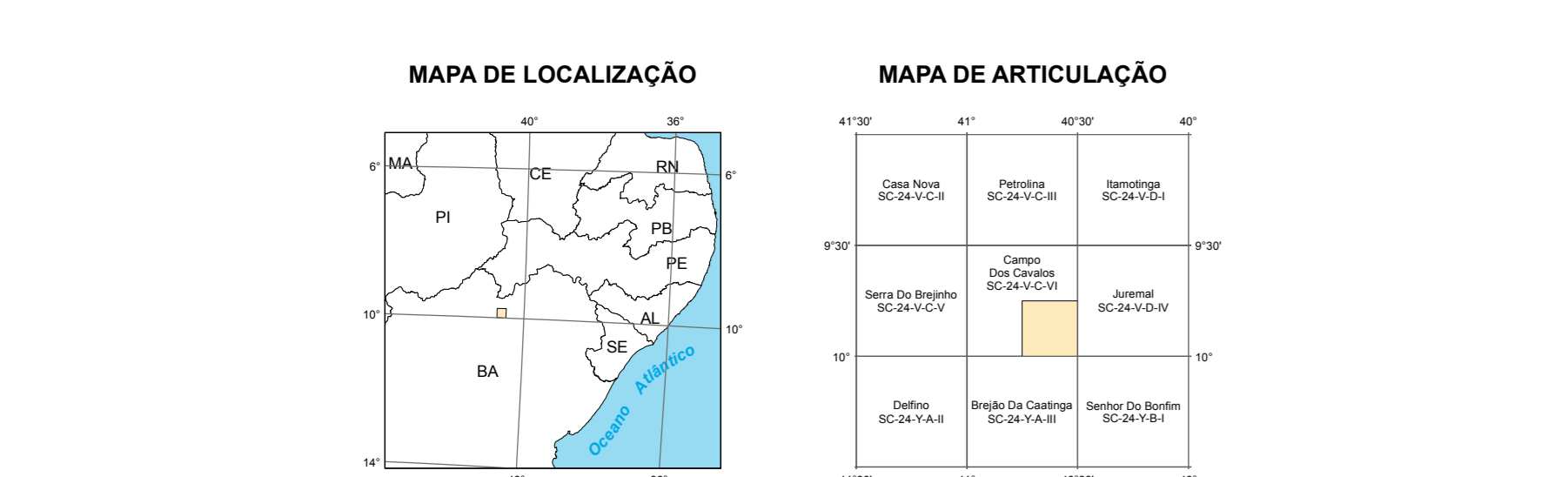
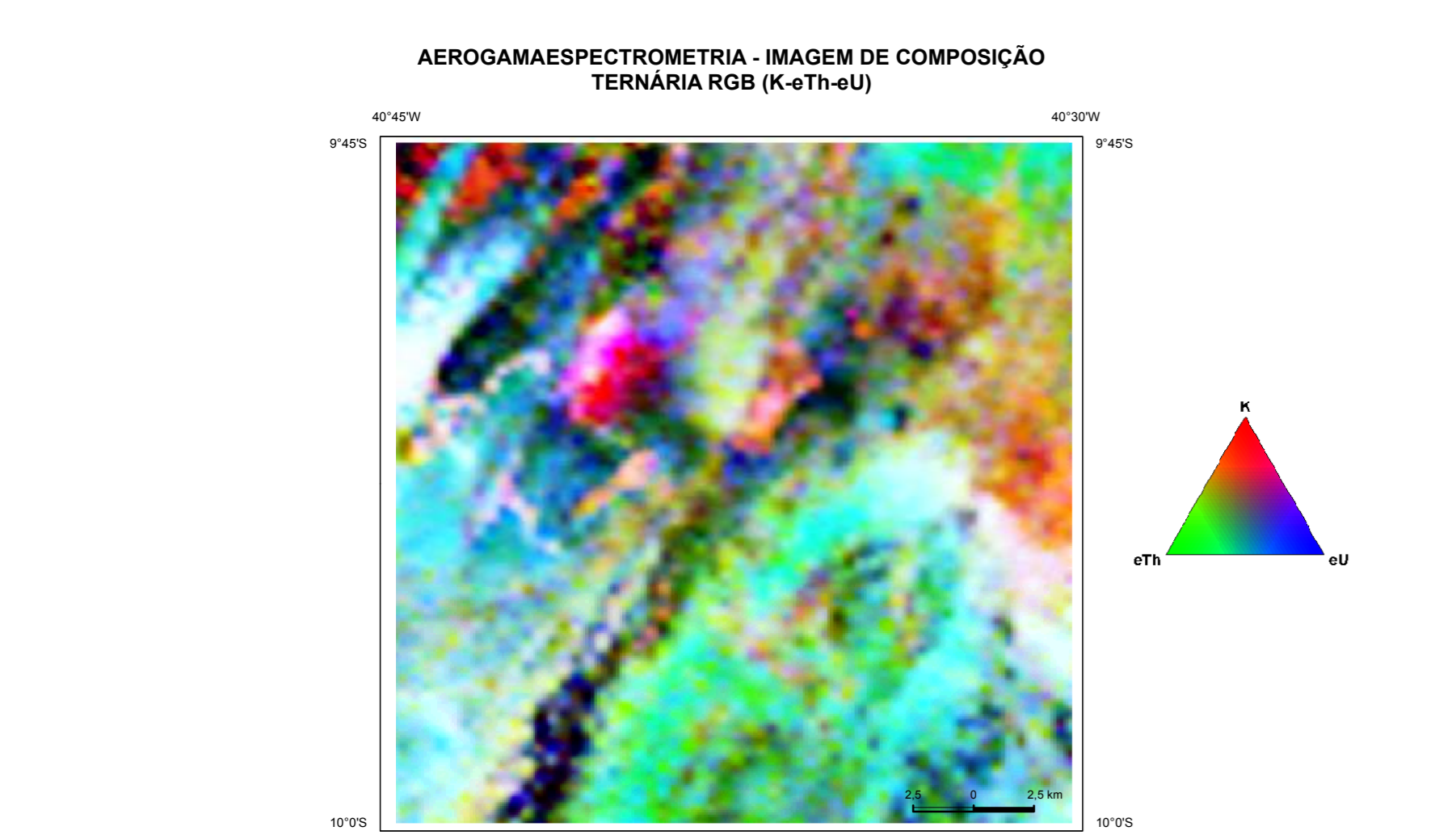
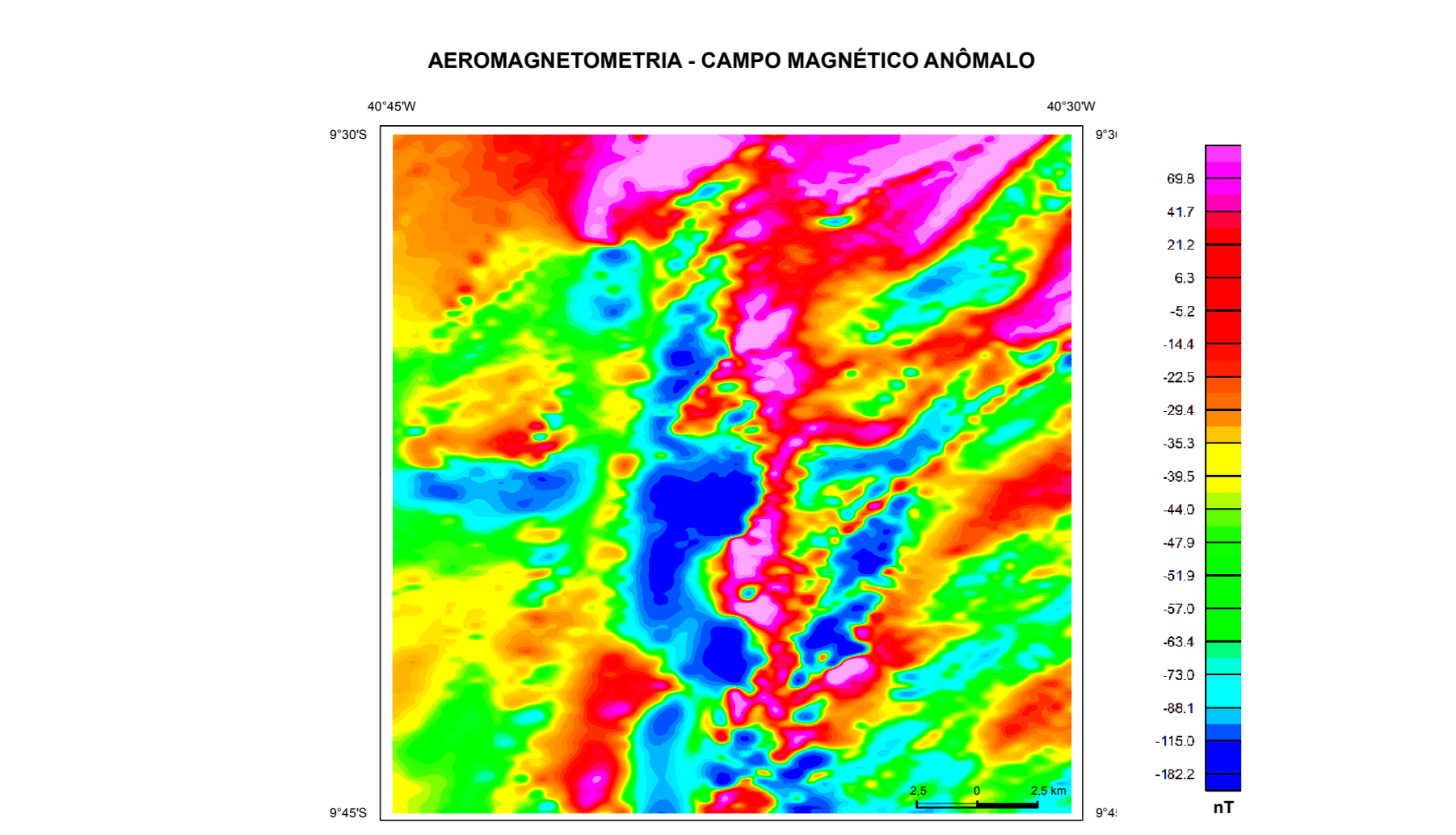
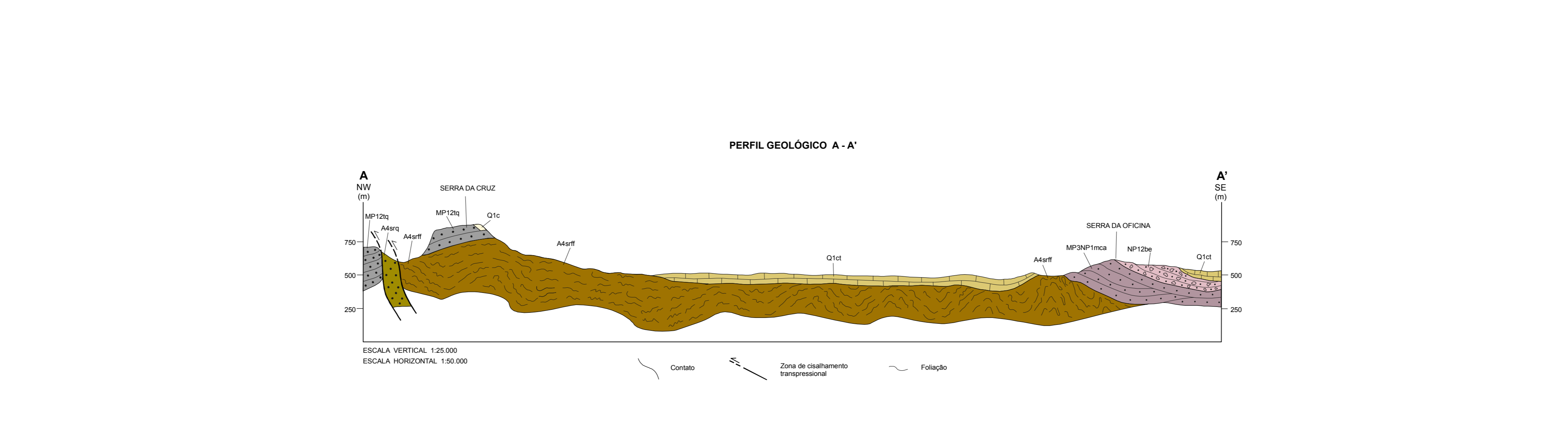
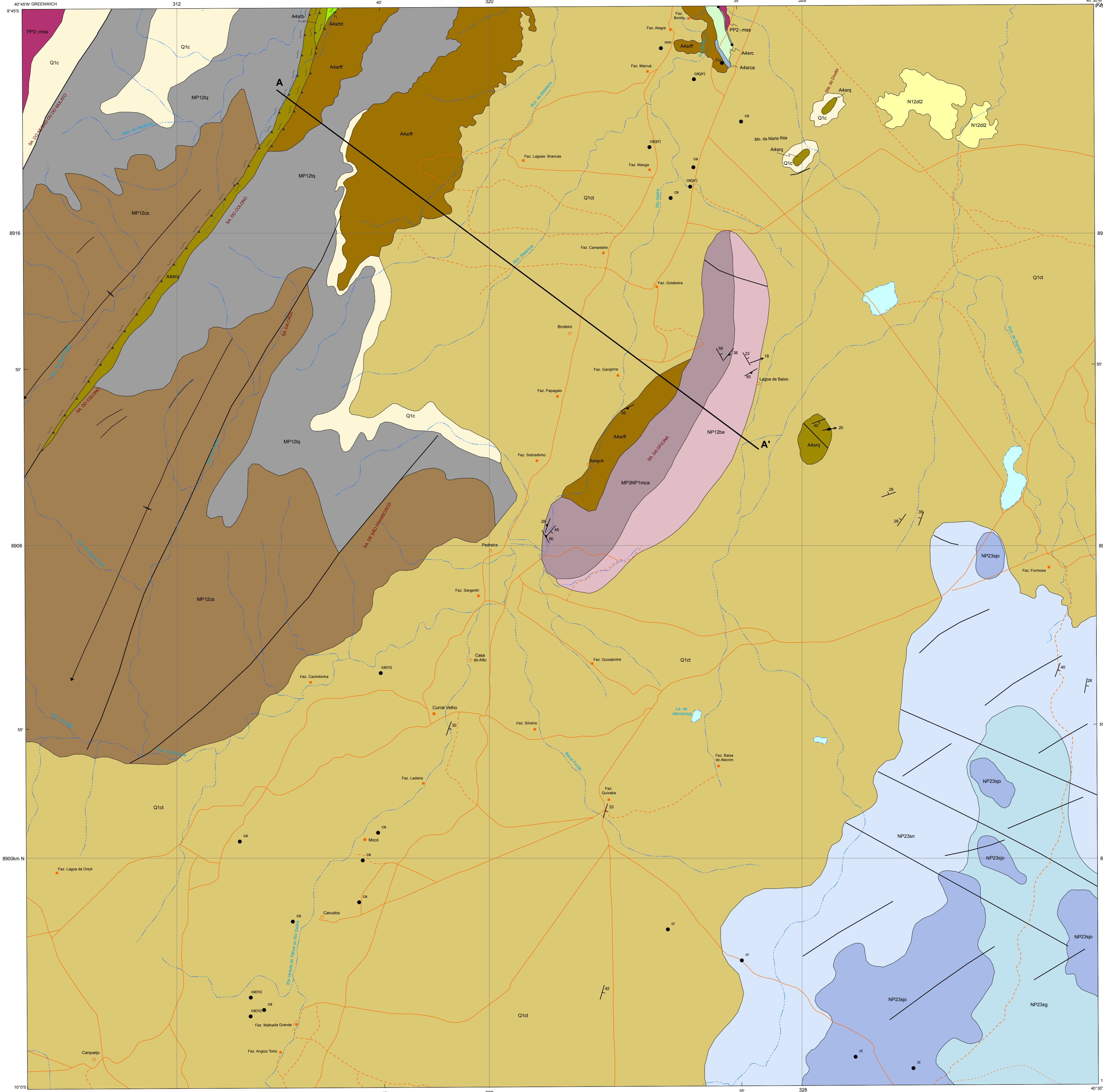


Legend for geological units and features, including symbols for different geological units and their spatial distribution.



OPERAÇÃO Áreas de Relevante Interesse Mineral - ARIM, da Diretoria de Geologia e Recursos Minerais - DGRM, é parte da Ação de Avaliação dos Recursos Minerais do Brasil e consiste em um conjunto de projetos voltados para a identificação de áreas atrativas para exploração mineral, visando estimular a pesquisa e a produção mineral brasileira.



RELACIONES TECTONO-ESTRATIGRÁFICAS: A stratigraphic correlation chart showing the relationship between geological units from different periods and their stratigraphic positions.

UNIDADES LITOESTRATIGRÁFICAS: A list of lithostratigraphic units with their descriptions and corresponding symbols. Includes units like Q1c, Q1cl, N1202, NP23ap, etc.

CONVENÇÕES GEOLÓGICAS and CONVENÇÕES CARTOGRÁFICAS: Symbols and conventions used in the geological map. Includes symbols for faults, folds, and other geological features, as well as cartographic symbols for roads, rivers, and other features.